



Dear Parents & Carers

Home-School Communication

Improving the way we engage and communicate with parents was highlighted as an area for development on the school's Ofsted report. There are a number of systems currently running, I would like to streamline our correspondence so that you have a clear understanding of where to find the necessary information you need to support your child's learning.

One option is to move everything to a system called eSchools. This system encompasses our school website, a text system, school email and we would create dedicated class pages.



You can download the eSchool lite version of the app to access the school calendar, newsletters and the school website now to give you an initial idea.

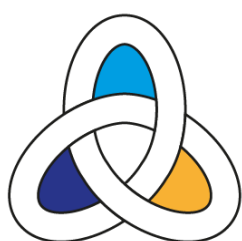


Search for "eSchools Lite" in the **App Store (Apple)** or **Google Play (Android)** or use the handy QR code and download for **FREE!**

In order to help me make this decision, I would like to understand which forms of communication you find most useful. Please let me know your opinions using the link below:

<https://forms.office.com/e/VWnuPiXvcd>

Who are Cornwall Education Learning Trust?



CORNWALL EDUCATION LEARNING TRUST

I wanted to take the opportunity to explain a little more about what it means to be part of Cornwall Education Learning Trust. 'CELT' was formed in 2019 and now consists of the following schools:

Primary	Secondary
Carclaze	Bodmin College (including Sixth Form)
Fowey	Brannel
Lostwithiel	Newquay Tretherras (including Sixth Form)
Luxulyan	Penrice
Mevagissey	Poltair
Mount Charles	
Newquay Junior	
Newquay Primary	
Pondhu	
Port Isaac	
St. Mewan	

How does being part of a Trust help our school?



Many of the ways that CELT help us are 'behind the scenes' and are centralised services which help the day to day running of the school. CELT provide us with a finance team, estates and site support, HR and recruitment support, IT technical support and administrative support. Without these centralised services, our school team's workload would be much greater and would reduce our capacity to focus on what is most important to us – our pupils.

In addition to all of these services, being part of CELT also enables us to access support to ensure that we are always striving to provide the best education and experiences for our pupils. The combined teaching force of 11 primary schools contains a huge amount of expertise across the curriculum. Each term all of our subject leaders meet together to share teaching ideas, planning and resources and CELT also organise training opportunities for our teachers and support staff as well.

CELT's Safeguarding Lead and our Trust SENDCo also provide important support for our safeguarding team and our school SENDCo, Mrs. Dimmock.

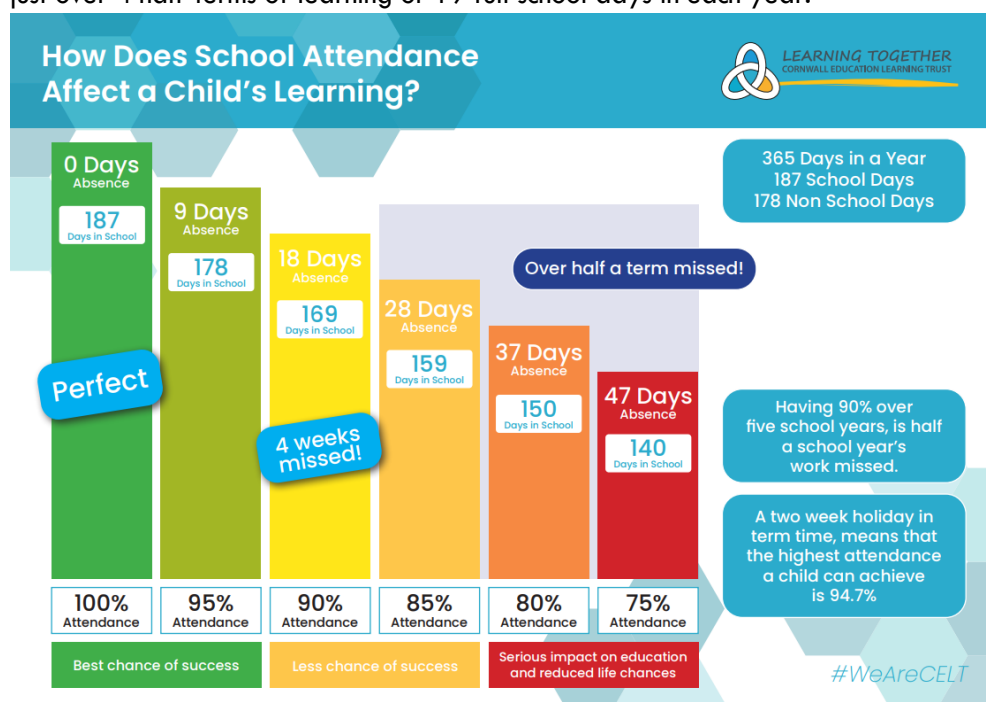
How does being part of a Trust benefit our pupils?

In simple terms – hugely! We are able to access amazing opportunities for our pupils as a result of being part of Cornwall Education Learning Trust. Sports events, author events, residential visits, new buildings, exciting new learning resources as well as sharing learning resources are all ways in which being part of the trust helps our children.

Attendance & Punctuality

Regular and punctual school attendance is important. Pupils need to attend school regularly if they are to take full advantage of the educational opportunities available to them by law. CELT recognises its responsibilities to ensure children are in school and on time, therefore having access to learning for the maximum number of days and hours.

Children who are persistently late or absent soon fall behind with their learning. Children who are absent from school frequently develop large gaps in their learning which will impact on their progress and their ability to meet age related learning expectations. A pupil whose attendance drops to 90% each year will, over their time at school miss just over 4 half-terms of learning or 19 full school days in each year.





Please talk to your child's class teacher if you have any concerns that are impacting upon attendance and punctuality and we will support you.

Congratulations to our certificate winners on...

.....Friday 1st December

Seal Class	Star of the Week	
	English Star	
	Maths Star	
Puffin Class	Star of the Week	Olivia
	English Star	Corben
	Maths Star	Josie
Dolphin Class	Star of the Week	Tyler
	English Star	Barney
	Maths Star	Willow

Kind Regards,

Emma Williams
Headteacher

Whole School Attendance this week

95.8 %

For all CELT schools the attendance threshold is set at 96% in line with national attendance data.

Seals	Puffins	Dolphins
95.9 %	95.1 %	96.6 %



The bag2school collection saw 320Kg of textiles go to be re-used instead of ending up in landfill and raised £160.00. Thank you to everyone who brought bags in.



'SHIPS OF DREAMS'

Christmas Lantern Parade- Friday 8th December

Meet at school for 5pm where your child will collect their lantern.

The procession begins at 5.30pm from the old carpark between Port Gaverne and Port Isaac.

Families are invited to join the procession and walk with their children.

The school will congregate to sing 'The Ships of Dreams' song just after the lights have been turned on.



Christmas Sharing Evening- Wednesday 13th December

- All children to meet at the church at 5.40pm please.
- FOS are serving minced pies and mulled wine in the church.
- Sharing begins at 6.00 pm



- All children to wear black or dark colours for our Christmas sharing evening, our dress rehearsals are on Monday 11th and Wednesday 13th please send your child to school with their dark/black clothes in a named bag.

What's On?

December Dates & Events	
Wednesday 6 th December	Christmas Fayre in the hall at 3.30pm
Friday 8 th December	Port Isaac Christmas Light switch on. Procession starts at 5:30pm, children have all made lanterns in school and families are invited to process from the old car park down to The Platt with their children. The lights will be turned on at 6pm.
Tuesday 12 th December	Christingle Assembly in school
Wednesday 13 th December	Dress rehearsal in the church Christmas Sharing Evening– info above
Thursday 14 th December	Christmas Dinner – don't forget to order on ParentPay FOS Secret Santa – bring £1.00 Children invited to wear Festive Clothes on this day: jumpers, Festive partywear Singing Community Café 2pm
Friday 15 th December	Last day of term for children